



A.R. ENGINEERING COLLEGE

(Approved by AICTE, New Delhi & Affiliated to Anna University, Chennai)
Vadakuchipalayam, Kappiyampuliyur post, Villupuram-605601, Tamilnadu.

Criterion 6 – Governance, Leadership and Management

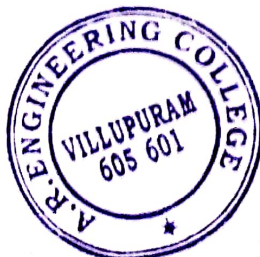
Key Indicator – 6.2 Strategy Development and Deployment

6.2.1 The functioning of the institutional bodies is effective and efficient as visible from policies, administrative setup, appointment and service rules, procedures, deployment of institutional strategic/perspective/development plan etc.

NOTE: The supporting documents for this metric exceed the upload limit of 5MB. Hence the documents are made available in HEI website and links for the metric is given below.

INDEX

| METRIC | PARAMETER | LINK TO RELEVANT DOCUMENTS |
|--------|---|--------------------------------|
| 6.2.1 | The functioning of the institutional bodies is effective and efficient as visible from policies, administrative setup, appointment and service rules, procedures, deployment of institutional strategic/perspective/development plan etc. | VIEW DOCUMENTS |



K. Panneerdhass
Dr. R. PANNEERDHASS, M.E., Ph.D.,
PRINCIPAL
A.R. ENGINEERING COLLEGE
VADAKUCHIPALAYAM,
KAPPIYAMPULIYUR POST,
VILLUPURAM-605 601.



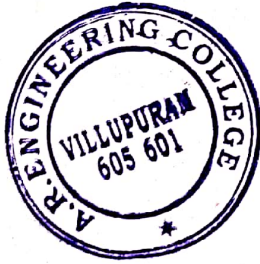


A.R. ENGINEERING COLLEGE

(Approved by AICTE, New Delhi & Affiliated to Anna University, Chennai)
Vadakuchipalayam, Kappiyampuliyurpost, Villupuram-605601, Tamilnadu.

CONTENT

| S.NO | DESCRIPTION | PAGENO |
|------|-------------|--------|
| 1 | WRITEUP | 1 |



Dr. R. PANNEERDHASS, M.E., Ph.D.,
PRINCIPAL
A.R. ENGINEERING COLLEGE
VADAKUCHIPALAYAM,
KAPPIYAMPULIYUR POST,
VILLUPURAM-605 601.



A. R. ENGINEERING COLLEGE

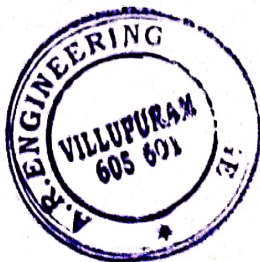
(Approved by AICTE, New Delhi & Affiliated to Anna university, Chennai)
Vadakuchipalayam, Kappiyampuliyur post, Villupuram-605601, Tamilnadu.

6.2.1 the functioning of the institutional bodies is effective and efficient as visible from policies, administrative setup, appointment and service rules, procedures, deployment of institutional strategic/perspective/development plan etc.

AREC has well-defined structure of governance to promote effective and efficient functioning of cells, clubs and committees. Each member in the structure has clear and transparent roles and responsibilities that are documented and implemented by the guidelines of the Society and the Institution.

AREC has the following policies and procedures for effective implementation of participative governance.

- 1.Sports policy
- 2.Planning and monitoring policy
- 3.Admission policy
- 4.Institutional freeship policy
- 5.Human resource policy
- 6.Examination policy
- 7.Research policy
- 8.IT policy
- 9.Purchase policy
- 10.Maintenance policy
- 11.Green campus and environment policy
- 12.Internship policy
- 13.Grievance policy
- 14.Training policy
- 15.Placement policy
- 16.Library policy
- 17.Alumni policy



Dr. R. PANNEERDHASS, M.E., Ph.D.,
PRINCIPAL
A.R. ENGINEERING COLLEGE
VADAKUCHIPALAYAM,
KAPPIYAMPULIYUR POST,
VILLUPURAM-605 601.





A. R. ENGINEERING COLLEGE

(Approved by AICTE, New Delhi & Affiliated to Anna university, Chennai)
Vadakuchipalayam, Kappiyampuliyur post, Villupuram-605601, Tamilnadu.

The planning and evaluation of the committees are done regularly and policies are also reviewed and revised if necessary.

Appointment and service rules

For Promotion and Services, AREC follows Anna University norms. Human Resource (HR) policy articulates about appointment, Promotion, reliving and Career development of the staff.

Deployment of Strategy Plan

The strategic plan deployed under 8 verticals as follows

| S.No | Strategic Plan | Sub Plans |
|------|--------------------------------------|--|
| 1 | Enhance engagement with Society | NSS, YRC, Various Clubs , Professional Societies Students Chapter |
| 2 | Diverse Student learning environment | ICT based TL, Value Added, Finishing School Courses. |
| 3 | Enhance engagement with Industry | Guest Lectures, Internship, MOUs, Industrial Projects, Industry Support, etc |
| 4 | Improve internal support systems | LMS, Effective Implementation of Moodles, etc |
| 5 | Enhance alumni engagement | Registered Alumni Association, Alumni Meet, Alumni Contributions, etc |
| 6 | Develop a cleaner and greener campus | Solar, LED, All type of Waste Management, Green Landscaping campus |
| 7 | Enhance Research Culture | R&D Policy, Paper in UGC and other SCI, Scopus Advanced Centres for Research / Future tech Labs. |



Dr.R.PANNEERDHASS, M.E., Ph.D.,
PRINCIPAL

A.R.ENGINEERING COLLEGE
VADAKUCHIPALAYAM,
KAPPIYAMPULIYUR POST,
VILLUPURAM-605 601.



A. R. ENGINEERING COLLEGE

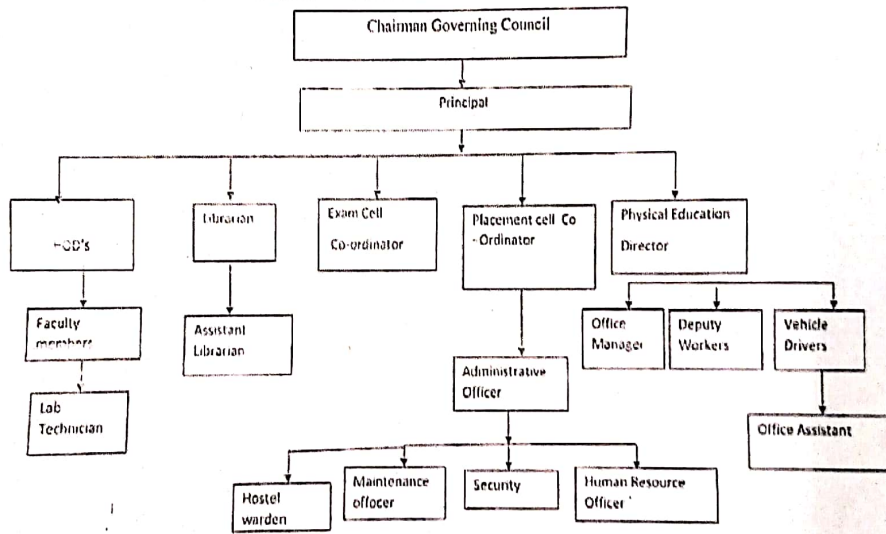
(Approved by AICTE, New Delhi & Affiliated to Anna university, Chennai)
Vadakuchipalayam, Kappiyampuliyur post, Villupuram-605601, Tamilnadu.



A. R. ENGINEERING COLLEGE

(Approved by AICTE, New Delhi & Affiliated to Anna university, Chennai)
Vadakuchipalayam, Kappiyampuliyur post, Villupuram-605601, Tamilnadu.

ORGANO GRAM OF A.R ENGINEERING COLLEGE



Dr.R.PANNEERDHASS,M.E.,Ph.D.,
PRINCIPAL
A.R.ENGINEERING COLLEGE
VADAKUCHIPALAYAM,
KAPPIYAMPULIYUR POST,
VILLUPURAM-605 601.